

## FPR / GRP Installation and Cutting Guide

Cutting FRP is simple and similar to working with wood, with some slight differences. To obtain clean, precise and good quality cuts, we recommend using diamond tipped circular blades of the type that is used for bricks. It is possible to use the standard rotation speed of the disk.

### General safety information

When moving FRP, please wear protective gloves and safety shoes.

When cutting FRP, please wear protective goggles to prevent injuries to the eyes and wear a mask to prevent dust inhalation.

The dust generated when cutting, after long periods of contact, can cause skin irritation to some people. It is recommended to wear cover-all gloves, a cap (together with a mask and goggles) to reduce or eliminate possible skin irritation while cutting, sanding or machining operations.

If the cutting operation is done on the ground, support the FRP (i.e. with a wooden pallet) and make sure that the panel cannot shift or move. If the panel shifts or moves during the cutting operation, besides being dangerous, the cutting result could be poor.



### Straight cuts

Support the FRP adequately to prevent accidents or chipping on the FRP.

Using a circular power saw will permit quick and accurate straight cuts of the gratings. If possible, use a table model that will permit more accurate straight cuts thanks to the built-in, adjustable guides.



### Circular cuts

Support the FRP adequately to prevent accidents or chipping on the FRP.

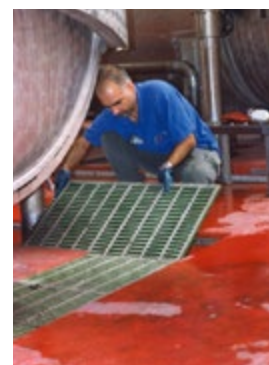
Using a jigsaw with a carbide or diamond tipped blade to obtain the best quality and the easiest fabrication. For small quantities, it is possible to use normal blades. Cut through a common brick to clean them.



### Sanding

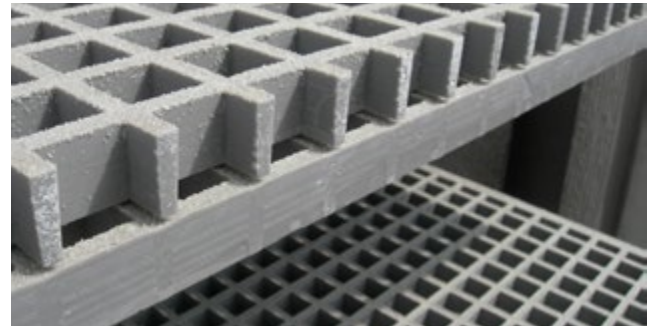
To sand eventual imperfections of the cut edges, treat the surface as if it was wood.

Use a high-speed sanding machine with adequate sandpaper to obtain the best result. Do not apply excessive pressure, otherwise the surface of the FRP will have an uneven result.



### Edge Banding

Edge banding of the FRP is not necessary because the bars are self-supporting.



## FPR / GRP Installation and Cutting Guide

### Finishing

The FRP is resistant to weather and chemicals, therefore it does not need painting or additional coatings.

However, if the panels are used in a highly corrosive environment, it is recommended to edge seal the cut sides with resin to cover the exposed glassfibre strands and to prevent possible areas of infiltration and corrosive attack.

Use catalyzed vinyl ester resin to seal the cut edges.



### Installation

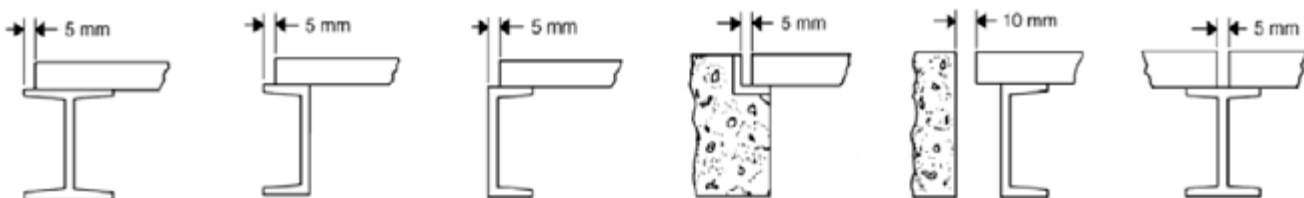
When positioning the gratings, provide a 5-10 mm gap on all sides (depending on the installation, temperature, application and product).

Appropriate fixing clips (minimum of 4 per panel) should be used to hold down gratings. Closed gratings have the tendency to warp, therefore it is highly recommended to fix the panels with appropriate fixing devices.

Material of the fixing clips must be evaluated according to application environment.

The width of the support must be at least equal to the height of grating panels in order to distribute the weight and stresses correctly.

If for example, the grating used is a mesh 19x19 h30 mm, then it would have to be supported by at least 30 mm wide beams on each side.



### Cleaning

Regular cleaning will keep your grating product free of debris and looking new. Products are easily cleaned by high-pressure water or steam - or just a normal broom.

**NOTE:** Do not use steel brushes or chemical cleaners on the surface.